

new to range

MAY 2016



aplus[®]
Automotive Parts

PASSENGER CAR

www.aplus-automotive.com





new to range
MAY 2016

26392AP

ACURA



TIE ROD END

RIGHT
* Handed : 26391AP
Front Axle



MODEL	START YEAR	END YEAR	OEM / COMPARISON NO	TECHNICAL SPECIFICATIONS
NSX	1995/01	2005/12	53540SL0A01	CL : Ø15
			ES800826	CU : Ø12,88
				D : M12x1,25
				M : M12x1,25

26391AP

ACURA



TIE ROD END

LEFT
* Handed : 26392AP
Front Axle



MODEL	START YEAR	END YEAR	OEM / COMPARISON NO	TECHNICAL SPECIFICATIONS
NSX	1995/01	2005/12	53560SL0A01	CL : Ø15
			ES800827	CU : Ø12,88
				D : M12x1,25
				M : M12x1,25

26393AP

ACURA



TIE ROD END

LEFT
* Handed : 26394AP
Front Axle



MODEL	START YEAR	END YEAR	OEM / COMPARISON NO	TECHNICAL SPECIFICATIONS
RL	2005/01	2012/12	ES800869	CL : Ø16,2
RL	2005/01	2012/01		CU : Ø14,5
				D : M14x1,5
				M : M12x1,25



26394AP

ACURA



TIE ROD END

RIGHT
* Handed : 26393AP
Front Axle



MODEL	START YEAR	END YEAR	OEM / COMPARISON NO	TECHNICAL SPECIFICATIONS
RL	2005/01	2012/12	53540SJA014	CL : Ø16,2
RL	2005/01	2012/01	ES800868	CU : Ø14,5
				D : M14x1,5
				M : M12x1,25

26417AP

AUDI



TRACK CONTROL ARM

LEFT
* Handed : 26418AP
Front Axle



MODEL	START YEAR	END YEAR	OEM / COMPARISON NO	TECHNICAL SPECIFICATIONS
A6 (4G2, C7)	2011/03	-	8K0407505J	L : 268
A6 Avant (4G5, C7)	2011/05	-	8K0407505M	h : 40
A7 Sportback (4GA)	2010/10	-		ID : Ø10,3
A7 SPORTBACK 4GA	2010/01	-		

26418AP

AUDI



TRACK CONTROL ARM

RIGHT
* Handed : 26417AP
Front Axle



MODEL	START YEAR	END YEAR	OEM / COMPARISON NO	TECHNICAL SPECIFICATIONS
A6 (4G2, C7)	2011/03	-	8K0407506J	L : 268
A6 Avant (4G5, C7)	2011/05	-	8K0407506M	h : 40
A7 Sportback (4GA)	2010/10	-		ID : Ø10,3
A7 SPORTBACK 4GA	2010/01	-		



new to range
MAY 2016

26390AP

CADILLAC



TIE ROD END

RIGHT
* Handed : 26389AP
Front Axle



MODEL	START YEAR	END YEAR	OEM / COMPARISON NO	TECHNICAL SPECIFICATIONS
CTS	2008/01	20134/12	19177445	CL : Ø16,5
			ES800642	CU : Ø12,83
				D : M14x1,5
				M : M12x1,25

26389AP

CADILLAC



TIE ROD END

LEFT
* Handed : 26390AP
Front Axle



MODEL	START YEAR	END YEAR	OEM / COMPARISON NO	TECHNICAL SPECIFICATIONS
CTS	2008/01	20134/12	19177444	CL : Ø16,5
			ES800641	CU : Ø12,83
				D : M14x1,5
				M : M12x1,25

26386AP

CHEVROLET



TIE ROD END

LEFT & RIGHT
Front Axle



MODEL	START YEAR	END YEAR	OEM / COMPARISON NO	TECHNICAL SPECIFICATIONS
EQUINOX	2010/01	2015/12	19207057	CL : Ø18
			ES800640	CU : Ø13,33
				D : M14x1,5
				M : M12x1,75



26396AP

CHEVROLET



TIE ROD END

LEFT & RIGHT
Front Axle



MODEL	START YEAR	END YEAR	OEM / COMPARISON NO	TECHNICAL SPECIFICATIONS
EXPRESS VAN 1500	2003/01	2014/01	26095475	CL : Ø17,7
EXPRESS VAN 2500	2003/01	2014/01	ES80311	CU : Ø14
SAVANNA 1500	2003/01	2014/01		D : M14x1,5
SAVANNA 2500	2003/01	2014/01		M : M14x2

26399AP

DODGE



TIE ROD END

LEFT & RIGHT
Front Axle



MODEL	START YEAR	END YEAR	OEM / COMPARISON NO	TECHNICAL SPECIFICATIONS
RAM 1500	2006/01	2010/12	5175790AA	CL : Ø18,9
			ES80574	CU : Ø14,9
			5175790AB	D : M17x1,5
			ES80574	M : M14x1,5

25207AP

FORD



WISHBONE

RIGHT
* Handed : 25206AP
Front Axle



MODEL	START YEAR	END YEAR	OEM / COMPARISON NO	TECHNICAL SPECIFICATIONS
FUSION	2009/01	2012/12	AE5Z3084A	M : M12x1,25
				ID : Ø10,3
				bl : 44,5



new to range
MAY 2016

25206AP

FORD

WISHBONE



LEFT
* Handed : 25207AP
Front Axle



MODEL	START YEAR	END YEAR	OEM / COMPARISON NO	TECHNICAL SPECIFICATIONS
FUSION	2009/01	2012/12	AE5Z3085A	M : M12x1,25
				ID : Ø10,3
				bl : 44,5

26409AP

FORD

BALL JOINT



LEFT & RIGHT
Front Axle



MODEL	START YEAR	END YEAR	OEM / COMPARISON NO	TECHNICAL SPECIFICATIONS
FUSION	2009/01	2012/12	AE5Z3084A-P	CL : Ø15,1
			AE5Z3085A-P	CU : Ø12,6
				M : M12x1,5
				T : Ø38,4

26396AP

GMC

TIE ROD END



LEFT & RIGHT
Front Axle



MODEL	START YEAR	END YEAR	OEM / COMPARISON NO	TECHNICAL SPECIFICATIONS
EXPRESS VAN 1500	2003/01	2014/01	26095475	CL : Ø17,7
EXPRESS VAN 2500	2003/01	2014/01		CU : Ø14
SAVANNA 1500	2003/01	2014/01		D : M14x1,5
SAVANNA 2500	2003/01	2014/01		M : M14x2



new to range
MAY 2016

26415AP

HYUNDAI



STABILIZER

LEFT

* Handed : 26416AP
Front Axle



MODEL	START YEAR	END YEAR	OEM / COMPARISON NO	TECHNICAL SPECIFICATIONS
I 10	2013/09	-	54830B4000	M : M10x1,25
				L : 230
				D : Ø8

26416AP

HYUNDAI



STABILIZER

RIGHT

* Handed : 26415AP
Front Axle



MODEL	START YEAR	END YEAR	OEM / COMPARISON NO	TECHNICAL SPECIFICATIONS
I 10	2013/09	-	54840B4000	M : M10x1,25
				L : 230
				D : Ø8

26421AP

JAGUAR



STRUT CONTROL ARM

LEFT & RIGHT

Rear Axle



MODEL	START YEAR	END YEAR	OEM / COMPARISON NO	TECHNICAL SPECIFICATIONS
X-TYPE (CF1)	2001/06	-	C2S50863	L : 215
X-TYPE Estate	2003/11	-		PD : Ø35
X-TYPE Saloon (CF1)	2001/06	-		ID : Ø12,2



25214AP

JEEP



STABILIZER

LEFT & RIGHT
Rear Axle



MODEL	START YEAR	END YEAR	OEM / COMPARISON NO	TECHNICAL SPECIFICATIONS
WRANGLER	1991/01	1995/12	52087863	L : 177
WRANGLER II (TJ)	1996/08	2008/12	52088896AA	D : Ø12
			52088896AA	

26405AP

JEEP



STABILIZER

LEFT & RIGHT
Rear Axle



MODEL	START YEAR	END YEAR	OEM / COMPARISON NO	TECHNICAL SPECIFICATIONS
GRAND CHEROKEE	2015/01	-	68069682AA	M : M12x1,5
			K750573	L : 116
				D : Ø10

24665AP

LAND ROVER



TRACK CONTROL ARM

RIGHT
* Handed : 24664AP
Front Axle



MODEL	START YEAR	END YEAR	OEM / COMPARISON NO	TECHNICAL SPECIFICATIONS
RANGE ROVER SPORT (LW)	2013/04	-	LR034217	M : M16x1,5
RANGE ROVER VOGUE	2013/04	-		L : 364
				h : 35 - 74
				ID : Ø14 - Ø14,2



24664AP

LAND ROVER



TRACK CONTROL ARM

LEFT
* Handed : 24665AP
Front Axle



MODEL	START YEAR	END YEAR	OEM / COMPARISON NO	TECHNICAL SPECIFICATIONS
RANGE ROVER SPORT (LW)	2013/04	-	LR034218	M : M16x1,5
RANGE ROVER VOGUE	2013/04	-		L : 364
				h : 35 - 74
				ID : Ø14 - Ø14,2

26412AP

LDV

AXIAL JOINT



LEFT & RIGHT
Front Axle



MODEL	START YEAR	END YEAR	OEM / COMPARISON NO	TECHNICAL SPECIFICATIONS
MAXUS BOX	2005/02	2009/12	543990012	D : M18x1,5
MAXUS BUS	2005/02	2009/12		M : M16x1,5
MAXUS PLATFORM CHASSIS	2005/02	2009/12		L : 264

26413AP

LDV

TIE ROD END



LEFT
* Handed : 26414AP
Front Axle



MODEL	START YEAR	END YEAR	OEM / COMPARISON NO	TECHNICAL SPECIFICATIONS
MAXUS BOX	2005/02	2009/12	543990015	CL : Ø18,6
MAXUS BUS	2005/02	2009/12		CU : Ø14,8
MAXUS PLATFORM CHASSIS	2005/02	2009/12		D : M16x1,5
				M : M14x1,5



26414AP

LDV

TIE ROD END



RIGHT
* Handed : 26413AP
Front Axle



MODEL	START YEAR	END YEAR	OEM / COMPARISON NO	TECHNICAL SPECIFICATIONS
MAXUS BOX	2005/02	2009/12	543990014	CL : Ø18,6
MAXUS BUS	2005/02	2009/12		CU : Ø14,8
MAXUS PLATFORM CHASSIS	2005/02	2009/12		D : M16x1,5
				M : M14x1,5

26377AP

MAZDA

WISHBONE



LEFT
* Handed : 26378AP
Front Axle



MODEL	START YEAR	END YEAR	OEM / COMPARISON NO	TECHNICAL SPECIFICATIONS
3 (BM)	2013/09	-	B60S34350	ID : Ø16,2
3 SALOON (BM)	2013/09	-	B45A34350D	bl : 52,5
			B45A34350E	

26378AP

MAZDA

WISHBONE



RIGHT
* Handed : 26377AP
Front Axle



MODEL	START YEAR	END YEAR	OEM / COMPARISON NO	TECHNICAL SPECIFICATIONS
3 (BM)	2013/09	-	B60S34300	ID : Ø16,2
3 SALOON (BM)	2013/09	-	B45A34300D	bl : 52,5
			B45A34300E	



26379AP

MAZDA



STABILIZER

LEFT

* Handed : 26380AP
Front Axle



MODEL	START YEAR	END YEAR	OEM / COMPARISON NO	TECHNICAL SPECIFICATIONS
3 (BM)	2013/09	-	B45A34170	M : M10x1,5
3 SALOON (BM)	2013/09	-		L : 284
				D : Ø9

26380AP

MAZDA



STABILIZER

RIGHT

* Handed : 26379AP
Front Axle



MODEL	START YEAR	END YEAR	OEM / COMPARISON NO	TECHNICAL SPECIFICATIONS
3 (BM)	2013/09	-	B45A34150	M : M10x1,5
3 SALOON (BM)	2013/09	-		L : 284
				D : Ø9

26381AP

MAZDA



TIE ROD END

LEFT

* Handed : 26382AP
Front Axle



MODEL	START YEAR	END YEAR	OEM / COMPARISON NO	TECHNICAL SPECIFICATIONS
3 (BM)	2013/09	-	GHT232290	CL : Ø15,5
3 SALOON (BM)	2013/09	-		CU : Ø12,65
				D : M14x1,5
				M : M12x1,25



26382AP

MAZDA



TIE ROD END

RIGHT
* Handed : 26381AP
Front Axle



MODEL	START YEAR	END YEAR	OEM / COMPARISON NO	TECHNICAL SPECIFICATIONS
3 (BM)	2013/09	-	GHT232280	CL : Ø15,5
3 SALOON (BM)	2013/09	-		CU : Ø12,65
				D : M14x1,5
				M : M12x1,25

26383AP

MAZDA



AXIAL JOINT

LEFT & RIGHT
Front Axle



MODEL	START YEAR	END YEAR	OEM / COMPARISON NO	TECHNICAL SPECIFICATIONS
3 (BM)	2013/09	-	GHT232240	D : M14x1,5
3 SALOON (BM)	2013/09	-	GHT232240A	M : M14x1,5
			GHT232240A	L : 236

26368AP

MERCEDES BENZ



AXIAL JOINT

LEFT & RIGHT
Front Axle



MODEL	START YEAR	END YEAR	OEM / COMPARISON NO	TECHNICAL SPECIFICATIONS
SLK (R172)	2011/02	-	2043380615	D : M16x1,5
				M : M14x1,5
				L : 291



26369AP

MERCEDES BENZ



STABILIZER

LEFT & RIGHT
Rear Axle



MODEL	START YEAR	END YEAR	OEM / COMPARISON NO	TECHNICAL SPECIFICATIONS
SLK (R172)	2011/02	-	1723200089	M : M10x1,5
				L : 240
				D : Ø10

26374AP

MERCEDES BENZ



STRUT CONTROL ARM

LEFT & RIGHT
Rear Axle



MODEL	START YEAR	END YEAR	OEM / COMPARISON NO	TECHNICAL SPECIFICATIONS
SLK (R172)	2011/02	-	1723500153	L : 257
				ID : Ø12,2

26036AP

NISSAN



STRUT CONTROL ARM

LEFT
* Handed : 26037AP
Rear Axle



MODEL	START YEAR	END YEAR	OEM / COMPARISON NO	TECHNICAL SPECIFICATIONS
ROGUE	2008/01	2014/01	55121JD00B	L : 480
X-TRAIL	2008/01	2014/01		PD : 50
				ID : Ø14,2



26037AP

NISSAN



STRUT CONTROL ARM

RIGHT
* Handed : 26036AP
Rear Axle



MODEL	START YEAR	END YEAR	OEM / COMPARISON NO	TECHNICAL SPECIFICATIONS
ROGUE	2008/01	2014/01	55120JD00B	L : 480
X-TRAIL	2008/01	2014/01		PD : 50
				ID : Ø14,2

26036AP

RENAULT



STRUT CONTROL ARM

LEFT
* Handed : 26037AP
Rear Axle



MODEL	START YEAR	END YEAR	OEM / COMPARISON NO	TECHNICAL SPECIFICATIONS
KADJAR 4x2 & 4x4	2015/06	-	55121JD00B	L : 480
			55121JD000	PD : 50
				ID : Ø14,2

26037AP

RENAULT



STRUT CONTROL ARM

RIGHT
* Handed : 26036AP
Rear Axle



MODEL	START YEAR	END YEAR	OEM / COMPARISON NO	TECHNICAL SPECIFICATIONS
KADJAR 4x2 & 4x4	2015/06	-	55120JD00B	L : 480
			55120JD000	PD : 50
				ID : Ø14,2



26117AP

SSANGYONG



STABILIZER

LEFT & RIGHT
Front Axle



MODEL	START YEAR	END YEAR	OEM / COMPARISON NO	TECHNICAL SPECIFICATIONS
RODIUS	2005/05	-	4475021010	M : M12x1,25
				L : 181
				D : Ø10

26356AP

TOYOTA



DRAGLINK

CENTER
Front Axle



MODEL	START YEAR	END YEAR	OEM / COMPARISON NO	TECHNICAL SPECIFICATIONS
LAND CRUISER 100	1998/01	-	4546069155	
LAND CRUISER 100 (_J10_)	1998/01	-		
LAND CRUISER 100 (UZJ100)	1998/01	-		
LAND CRUISER 80 (_J8_)	1990/01	1998/02		
LAND CRUISER AMAZON (_J10_)	1998/01	-		

26357AP

TOYOTA



TIE ROD END

LEFT
* Handed : 26358AP
Front Axle



MODEL	START YEAR	END YEAR	OEM / COMPARISON NO	TECHNICAL SPECIFICATIONS
LAND CRUISER (PZJ7_, KZJ7_, HZ	1984/03	-	4504669135	CL : Ø16
LAND CRUISER 80 (_J8_)	1990/01	1998/02		CU : Ø14,6
				D : M23x1,5 LHT
				M : M14x1,5



26358AP

TOYOTA



TIE ROD END

RIGHT
* Handed : 26357AP
Front Axle



MODEL	START YEAR	END YEAR	OEM / COMPARISON NO	TECHNICAL SPECIFICATIONS
LAND CRUISER (PZJ7_, KZJ7_, HZ	1984/03	-	4504769085	CL : Ø16
LAND CRUISER 80 (_J8_)	1990/01	1998/02		CU : Ø14,6
				D : M23x1,5 LHT
				M : M14x1,5

26395AP

TOYOTA



TIE ROD END

LEFT & RIGHT
Front Axle



MODEL	START YEAR	END YEAR	OEM / COMPARISON NO	TECHNICAL SPECIFICATIONS
TACOMA 4X2	1995/01	2004/01	4504639285	CL : Ø15,1
			ES80309	CU : Ø13,9
				D : M15x1,5
				M : M12x1,25

new to range

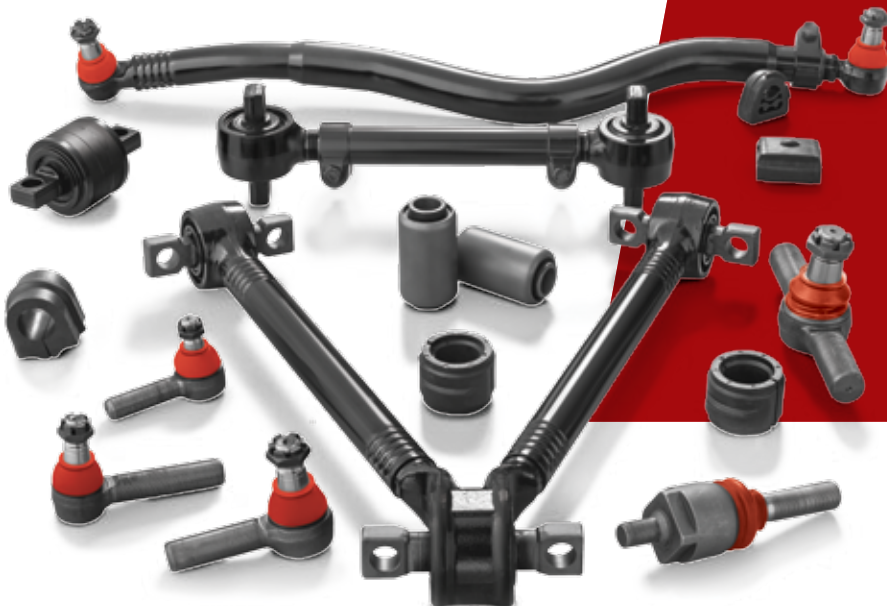
MAY 2016

aplus[®]
Automotive Parts



COMMERCIAL VEHICLES

www.aplus-automotive.com





new to range
MAY 2016

26376AP

BMC

TIE ROD



MODEL	START YEAR	END YEAR	OEM / COMPARISON NO	TECHNICAL SPECIFICATIONS
EFE 185-09	-	-	51RS960101	L : 1040
				PD : 50

22648AP

DAF

BUSHING



MODEL	START YEAR	END YEAR	OEM / COMPARISON NO	TECHNICAL SPECIFICATIONS
65 CF	1998/02	2000/12	0075761	OD : 61
75 CF	1998/02	2000/12	0374826	ID : 48
85 CF	1998/02	2000/12	1271385	h : 5,5
95 XF	1997/01	2002/02		
F 65	-	-		
F 75	-	-		
F 85	-	-		
F 95	-	-		
F28-F36/N28/TT2100	-	-		
XF 105	2005/10	-		
XF 95	2002/09	-		



23131AP

IVECO



V-STAY BAR



MODEL	START YEAR	END YEAR	OEM / COMPARISON NO	TECHNICAL SPECIFICATIONS
TRAKKER	2004/10	-	41272428	L : 665
				PD : 48
				I : 152 / 130
				ID : 25 / 21

23179AP

IVECO



STABILIZER BAR BEARING



MODEL	START YEAR	END YEAR	OEM / COMPARISON NO	TECHNICAL SPECIFICATIONS
EURORIDER	-	-	99432757	OD : 57,5
				ID : 28
				h : 64

22449AP

MAN



V-STAY BAR



MODEL	START YEAR	END YEAR	OEM / COMPARISON NO	TECHNICAL SPECIFICATIONS
TGM	2005/10	-	81432706129	L : 642,7
			81432706130	PD : 48
			81432706131	I : 115
				ID : 19



23451AP

MERCEDES BENZ



TORQUE ROD



MODEL	START YEAR	END YEAR	OEM / COMPARISON NO	TECHNICAL SPECIFICATIONS
O 371	-	-	6643307411	L : 585
O 374	-	-	6653307311	PD : 50
O 400	-	-		Id : 54

23764AP

MERCEDES BENZ



TIE ROD



MODEL	START YEAR	END YEAR	OEM / COMPARISON NO	TECHNICAL SPECIFICATIONS
1114	1984/01	1998/12	6884607405	CL : 22,2
809	1963/09	1998/12		CU : 19,9
812	-	-		L : 416
912	-	-		PD : 36
913	1963/09	1984/12		
914	1984/03	1998/12		
LO 610	-	-		
LO 712	-	-		
LO 809	-	-		
LO 812	-	-		
O 809	-	-		
O 812	1996/01	-		
O 813	-	-		
OF Series	1983/01	-		



25238AP

MERCEDES BENZ



STABILIZER



MODEL	START YEAR	END YEAR	OEM / COMPARISON NO	TECHNICAL SPECIFICATIONS
ACTROS 1824 - 1861	1996/04	2002/10	9493230011-K	L : 379
AXOR 1823 - 2044	2002/01	2004/10	9493230116-K	Id : 40,2
AXOR 2 1823 - 2044	2004/10	-		

25240AP

MERCEDES BENZ



STABILIZER



MODEL	START YEAR	END YEAR	OEM / COMPARISON NO	TECHNICAL SPECIFICATIONS
ACTROS 1824 - 1861	1996/04	2002/10	9433230211-K	L : 460
AXOR 1823 - 2044	2002/01	2004/10	9433230616-K	Id : 40,2
AXOR 2 1823 - 2044	2004/10	-		

25243AP

MERCEDES BENZ



STABILIZER



MODEL	START YEAR	END YEAR	OEM / COMPARISON NO	TECHNICAL SPECIFICATIONS
ACTROS 1824 - 1861	1996/04	2002/10	9433260447-K	L : 365
AXOR 1823 - 2044	2002/01	2004/10		Id : 40,2
AXOR 2 1823 - 2044	2004/10	-		



25884AP

MERCEDES BENZ



TIE ROD



MODEL	START YEAR	END YEAR	OEM / COMPARISON NO	TECHNICAL SPECIFICATIONS
O 500 U / 1725	-	-	3824600905	CL : 30,2
				CU : 27,1
				L : 964
				PD : 56

25890AP

MERCEDES BENZ



TIE ROD



MODEL	START YEAR	END YEAR	OEM / COMPARISON NO	TECHNICAL SPECIFICATIONS
O 500 (TOURO)	2001/10	-	3824601005	CL : 30,2
				CU : 27,1
				L : 972
				PD : 56

25953AP

MERCEDES BENZ



STABILIZER BAR BEARING



MODEL	START YEAR	END YEAR	OEM / COMPARISON NO	TECHNICAL SPECIFICATIONS
ATEGO 1014 - 1118	1998/01	2004/10	9703231485	OD : 61,5
ATEGO 1214 - 1229	1998/01	2004/10	9793200344	ID : 28
ATEGO 1315 - 1419	1998/01	2004/10		h : 47,5
ATEGO 1517 - 1728	1998/01	2004/10		
ATEGO 1823 - 1929	1998/01	2004/10		
ATEGO 2 712-2529	2004/10	-		
ATEGO 2223 - 2530	1998/04	2004/10		
ATEGO 2628 -	1998/04	2004/10		
ATEGO 712 - 717	1998/01	2004/10		
ATEGO 812 - 830	1998/01	2004/10		
ATEGO 914 - 930	1998/01	2004/10		
LN2 1217 ATEGO 1217-1223 ATEGO II 1218-1229	-	-		

25958AP

MERCEDES BENZ



RUBBER MOUNTING



MODEL	START YEAR	END YEAR	OEM / COMPARISON NO	TECHNICAL SPECIFICATIONS
ATEGO 1014 - 1118	1998/01	2004/10	9743280181	OD : 47,3
ATEGO 1214 - 1229	1998/01	2004/10		ID : 22,2
ATEGO 1315 - 1419	1998/01	2004/10		h : 40
ATEGO 1517 - 1728	1998/01	2004/10		
ATEGO 1823 - 1929	1998/01	2004/10		
ATEGO 2 712-2529	2004/10	-		
ATEGO 2223 - 2530	1998/04	2004/10		
ATEGO 2628 -	1998/04	2004/10		
ATEGO 712 - 717	1998/01	2004/10		
ATEGO 812 - 830	1998/01	2004/10		
ATEGO 914 - 930	1998/01	2004/10		



26032AP

MERCEDES BENZ



SILENTBLOCK



MODEL	START YEAR	END YEAR	OEM / COMPARISON NO	TECHNICAL SPECIFICATIONS
ACTROS 1824 - 1861	1996/04	2002/10	0003200744	OD : 53,5
ACTROS 2527 - 2560	1996/06	2002/10		ID : 20,2
ACTROS 2627 - 2665	1996/04	2002/10		h : 105

26331AP

MERCEDES BENZ



TIE ROD



MODEL	START YEAR	END YEAR	OEM / COMPARISON NO	TECHNICAL SPECIFICATIONS
O 500 M/ 1725	-	-	6344600005	CL : 30,2
O 500 M/ 1726	-	-		CU : 27,1
O 500 M/ 1728	-	-		L : 885
O 500 R / 1830	-	-		PD : 40
O 500RSD / 2036	-	-		

26332AP

MERCEDES BENZ



TIE ROD



MODEL	START YEAR	END YEAR	OEM / COMPARISON NO	TECHNICAL SPECIFICATIONS
O 370	-	-	3644607205	CL : 26,2
O 371	-	-		CU : 23,5
O 374	-	-		L : 951
O 400	-	-		PD : 36



26337AP

MERCEDES BENZ



TORQUE ROD



MODEL	START YEAR	END YEAR	OEM / COMPARISON NO	TECHNICAL SPECIFICATIONS
O 400	-	-	6643307811	L : 412
				PD : 50
				Id : 54

26355AP

MERCEDES BENZ



TIE ROD END

RIGHT



MODEL	START YEAR	END YEAR	OEM / COMPARISON NO	TECHNICAL SPECIFICATIONS
O 500 M/ 1725	-	-	6344600005-P	CL : 30,2
O 500 M/ 1726	-	-		CU : 27,1
O 500 M/ 1728	-	-		D : M30x1,5 RHT
O 500 R / 1830	-	-		L : 126
O 500RSD / 2036	-	-		

23018AP

RENAULT



TIE ROD



MODEL	START YEAR	END YEAR	OEM / COMPARISON NO	TECHNICAL SPECIFICATIONS
KERAX	1997/06	-	7420760425	CL : 30,2
			7421560913	CU : 27,1
				L : 827
				PD : 56



23020AP

RENAULT



TIE ROD



MODEL	START YEAR	END YEAR	OEM / COMPARISON NO	TECHNICAL SPECIFICATIONS
KERAX	1997/06	-	7420941401	CL : 30,2
			7421560919	CU : 27,1
				L : 821
				PD : 56

23179AP

RENAULT



STABILIZER BAR BEARING



MODEL	START YEAR	END YEAR	OEM / COMPARISON NO	TECHNICAL SPECIFICATIONS
KERAX DXI 11 -FAB-34.C/34.F	-	-	7401134955	OD : 57,5
KERAX DXI 13 -FAB-36.D/36.E	-	-		ID : 28
PREMIUM-TR--FAB-24.F/25.C	-	-		h : 64

23464AP

RENAULT



TIE ROD



MODEL	START YEAR	END YEAR	OEM / COMPARISON NO	TECHNICAL SPECIFICATIONS
MASCOTT	1999/01	2004/05	5010383410	CL : 22,2
				CU : 19,9
				L : 416
				PD : 36



23479AP

RENAULT



STABILIZER



MODEL	START YEAR	END YEAR	OEM / COMPARISON NO	TECHNICAL SPECIFICATIONS
FR1	1983/01	-	5000786379	L : 120
ILIADE	1997/01	-	5000869762	PD : 31
			5010151410	

26334AP

RENAULT



TIE ROD END

RIGHT
* Handed : 26335AP



MODEL	START YEAR	END YEAR	OEM / COMPARISON NO	TECHNICAL SPECIFICATIONS
MASCOTT	1999/01	2004/05	5010383410-P1	CL : 22,2
				CU : 19,95
				D : M24x1,5 RHT
				L : 115

26335AP

RENAULT



TIE ROD END

LEFT
* Handed : 26334AP



MODEL	START YEAR	END YEAR	OEM / COMPARISON NO	TECHNICAL SPECIFICATIONS
MASCOTT	1999/01	2004/05	5010383410-P2	CL : 22,2
				CU : 19,95
				D : M24x1,5 LHT
				L : 115



25990AP

SCANIA



BUSHING



MODEL	START YEAR	END YEAR	OEM / COMPARISON NO	TECHNICAL SPECIFICATIONS
3 SERIES TRUCK	-	-	0390359	OD : 91
3- SERIES	-	-		ID : 28
Serie 3	1988/01	1996/12		h : 44

22938AP

VOLVO



TIE ROD



MODEL	START YEAR	END YEAR	OEM / COMPARISON NO	TECHNICAL SPECIFICATIONS
FL 6	1985/09	2000/03	1071170	CL : 26,2
			20400940	CU : 23,5
				L : 769
				PD : 42

23179AP

VOLVO



STABILIZER BAR BEARING



MODEL	START YEAR	END YEAR	OEM / COMPARISON NO	TECHNICAL SPECIFICATIONS
B 10	1978/01	-	1134955	OD : 57,5
B 12	1992/01	-		ID : 28
				h : 64



23747AP

VW



TIE ROD



MODEL	START YEAR	END YEAR	OEM / COMPARISON NO	TECHNICAL SPECIFICATIONS
6-80	-	-	T06415701B	CL : 22,2
6-90	-	-		CU : 19,2
7-90	-	-		L : 770
				PD : 36

23765AP

VW



TIE ROD



MODEL	START YEAR	END YEAR	OEM / COMPARISON NO	TECHNICAL SPECIFICATIONS
15-180/190 OED	-	-	TAR417701A	CL : 28,1
16-180	-	-		CU : 24,6
16-180/210 OC	-	-		L : 717
17-210/230/260 EOD	-	-		PD : 40

new to range

MAY 2016



aplus[®]
Automotive Parts

RUBBER TO METAL

www.aplus-automotive.com





new to range
MAY 2016

26419AP

AUDI

SILENTBLOCK



MODEL	START YEAR	END YEAR	OEM / COMPARISON NO	TECHNICAL SPECIFICATIONS
A6 (4G2, C7)	2011/03	-	4H0407515	OD : Ø46,2
A6 Avant (4G5, C7)	2011/05	-	4H0407515A	ID : Ø10,3
A7 Sportback (4GA)	2010/10	-	4H0407515B	h : 40
A7 SPORTBACK 4GA	2010/01	-		

18348AP

BMW

SILENTBLOCK



LEFT
* Handed : 18349AP



MODEL	START YEAR	END YEAR	OEM / COMPARISON NO	TECHNICAL SPECIFICATIONS
3 (E46) xd	2000/06	2005/02	33311092515	OD : Ø81,5
3 Cabriolet (E46)	2000/04	-	33316757393	ID : Ø12,6
3 Compact (E46)	2001/06	2005/02	33316770783	h : 65
3 Coupe (E46)	1999/04	-	33316770815	
3 Saloon (E46)	1998/02	2005/04	33316770815	

23265AP

BMW

SILENTBLOCK



LEFT & RIGHT
Rear Axle



MODEL	START YEAR	END YEAR	OEM / COMPARISON NO	TECHNICAL SPECIFICATIONS
1 (E81)	2004/09	2012/09	33326763093	OD : Ø53,3
3 Saloon (E90)	2005/01	-	33326770829	ID : Ø14,2
X1 E84 XD	2009/01	-		h : 65
X1 E84 xd	2009/10	-		



24440AP

BMW



SILENTBLOCK

LEFT & RIGHT
Rear Axle



MODEL	START YEAR	END YEAR	OEM / COMPARISON NO	TECHNICAL SPECIFICATIONS
X3 (F25)	2010/09	-	33306786980	OD : Ø44,8
X3 F25	2010/01	-		ID : Ø12,2
X3 F25 xd	2010/09	-		h : 48
X4 (F26)	2014/04	-		

25403AP

HONDA



SILENTBLOCK

LEFT & RIGHT



MODEL	START YEAR	END YEAR	OEM / COMPARISON NO	TECHNICAL SPECIFICATIONS
ACCORD VI (CE, CF)	1996/02	1998/10	52306S84A01	ID : Ø15,5
ACCORD VI (CG, CK)	1997/03	2003/12		h : 35
ACCORD VI Coupe (CG)	1997/12	2003/06		



25405AP

HONDA



SILENTBLOCK

LEFT & RIGHT



MODEL	START YEAR	END YEAR	OEM / COMPARISON NO	TECHNICAL SPECIFICATIONS
ACCORD VII	2003/01	2008/12	51306S0XA01	ID : Ø23,2
ACCORD VII (CG, CK)	1997/03	2003/12	51306SDAA03	h : 45
ACCORD VII (CL)	2003/02	-	51306SDAA03	
ACCORD VII (CL)	2003/02	2008/05		
ACCORD VII Aerodeck (CM_)	1997/07	-		
ACCORD VII Coupe (CG)	1997/12	2003/06		
ACCORD VII Estate (CM_)	1997/07	-		
ACCORD VII Hatchback (CH)	1999/12	2002/12		
ACCORD VII Saloon (CG, CK)	1997/03	2003/12		
ACCORD VII Tourer (CM)	2003/04	-		

25401AP

HYUNDAI



SILENTBLOCK

LEFT & RIGHT



MODEL	START YEAR	END YEAR	OEM / COMPARISON NO	TECHNICAL SPECIFICATIONS
Sonata	1999/01	2005/12	5521538000	OD : Ø36
SONATA IV (EF)	1998/03	2005/05		ID : Ø12,5
				h : 49,5



25999AP

LAND ROVER



SILENTBLOCK



MODEL	START YEAR	END YEAR	OEM / COMPARISON NO	TECHNICAL SPECIFICATIONS
RANGE ROVER SPORT (LW)	2013/04	-	LR034217-P	OD : Ø47,1
RANGE ROVER VOGUE	2013/04	-	LR034218-P	ID : Ø14,2
				h : 74

26022AP

MAZDA



STABILIZER BAR BEARING

LEFT & RIGHT
Rear Axle



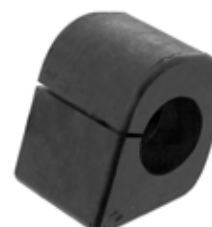
MODEL	START YEAR	END YEAR	OEM / COMPARISON NO	TECHNICAL SPECIFICATIONS
5 (CR19)	2005/02	-	C24328156D	ID : Ø19,5
				h : 34

26272AP

MERCEDES BENZ



STABILIZER BAR BEARING



MODEL	START YEAR	END YEAR	OEM / COMPARISON NO	TECHNICAL SPECIFICATIONS
LK/LN2	1984/01	1998/12	6753231485	OD : 82
				ID : Ø35
				h : 59,5



26324AP

MERCEDES BENZ



SILENTBLOCK

LEFT & RIGHT
Rear Axle



MODEL	START YEAR	END YEAR	OEM / COMPARISON NO	TECHNICAL SPECIFICATIONS
C SERIES (W204)	2007/01	-	2043510342	OD : Ø90,5
C SERIES (W204) 4matic	2007/07	-		ID : Ø18,2
C SERIES Coupe (C204)	2011/06	-		h : 77,5
C SERIES Estate (S204)	2007/08	-		
C SERIES S204	2007/08	-		
C SERIES Saloon (W204)	2007/01	-		
C SERIES T-Model (S204)	2007/08	-		
E SERIES (W212)	2009/01	-		
E SERIES A207	2010/01	-		
E SERIES C207	2009/01	-		
E SERIES Cabriolet (A207)	2010/01	-		
E SERIES Coupe (C207)	2009/01	-		
E SERIES Saloon (W212)	2009/01	-		

26104AP

MITSUBISHI



STABILIZER BAR BEARING

LEFT & RIGHT
Front Axle



MODEL	START YEAR	END YEAR	OEM / COMPARISON NO	TECHNICAL SPECIFICATIONS
ATTRAGE	2013/10	-	MR589597	ID : Ø18
				h : 36



26040AP

NISSAN

SILENTBLOCK



MODEL	START YEAR	END YEAR	OEM / COMPARISON NO	TECHNICAL SPECIFICATIONS
QASHQAI	2014/02	-	55121JD00B-P	OD : Ø37,6
				ID : Ø14,2
				h : 50

26040AP

RENAULT

SILENTBLOCK



MODEL	START YEAR	END YEAR	OEM / COMPARISON NO	TECHNICAL SPECIFICATIONS
KADJAR 4x2 & 4x4	2015/06	-	55120JD00B-P	OD : Ø37,6
			55121JD00B-P	ID : Ø14,2
				h : 50

26042AP

RENAULT

SILENTBLOCK



MODEL	START YEAR	END YEAR	OEM / COMPARISON NO	TECHNICAL SPECIFICATIONS
KADJAR 4x2 & 4x4	2015/06	-	55110JD000-P	OD : Ø37
			55111JD00A-P	ID : Ø14,2
				h : 50